

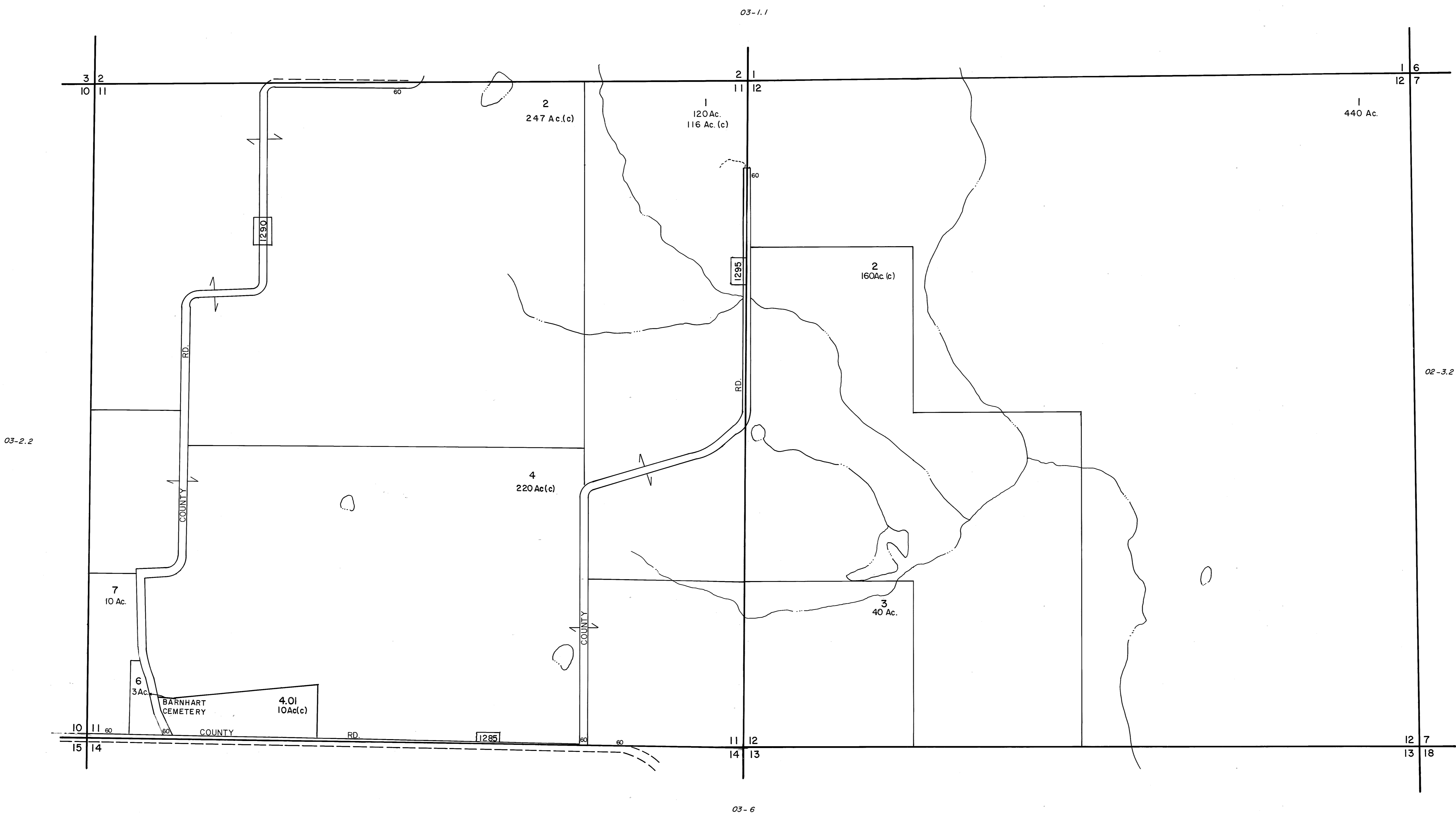
PLAN HOLD CORPORATION - IRVINE, CALIFORNIA
RECORDED BY NUMBER 0254R
RECORD DATE BY PERM OR PRELURE

PLAN HOLD CORPORATION - IRVINE, CALIFORNIA
RECORDED BY NUMBER 0254R
RECORD DATE BY PERM OR PRELURE

PLAN HOLD CORPORATION - IRVINE, CALIFORNIA
RECORDED BY NUMBER 0254R
RECORD DATE BY PERM OR PRELURE

PLAN HOLD CORPORATION - IRVINE, CALIFORNIA
RECORDED BY NUMBER 0254R
RECORD DATE BY PERM OR PRELURE

PLAN HOLD CORPORATION - IRVINE, CALIFORNIA
RECORDED BY NUMBER 0254R
RECORD DATE BY PERM OR PRELURE



WESTRAN R-1

OWNERSHIP MAP
RANDOLPH COUNTY, MISSOURI
 PREPARED UNDER THE DIRECTION OF
STATE TAX COMMISSION OF MISSOURI
 AND
RANDOLPH COUNTY TAX ASSESSOR
 PREPARED BY
ROBINSON AND ASSOCIATES, INC.
 306 OAK AVE., SPRUCE PINE, N.C. 28777

SCALE: 1" = 400'
 DATE OF MAP MARCH 4, 1981
 DATE OF PHOTOGRAPHY 1978
 AERIAL PHOTO NO. 178-71-1

SUBD. NO.	SUBDIVISION NAME	PLAT BOOK	PAGE

LEGEND

STATE LINE	---	AREA (FROM DEED)	10.5Ac.
COUNTY LINE	---	AREA (CALCULATED)	10.5Ac.(c)
CORPORATION LINE	---	DIMENSION (FROM DEED)	16.5
DISTRICT LINE	---	DIMENSION (CALCULATED)	66'(s)
ROAD R/W	---	SUBDIVISION LOT NUMBER	23
TOWNSHIP & RANGE LINES	---	PARCEL NUMBER	45
RAILROAD R/W	---	WATER	
INTERSTATE HIGHWAY	---	U. S. HIGHWAY	
STATE HIGHWAY	---	COUNTY HIGHWAY	
ROADS, STREETS, CHURCHES, ETC.	---	BY NAME	
SECTION CORNERS	---		2/11/12

MAP SHEET INDEX

6	5	4	3	2	1
03		02		01	
7	8	9	10	11	12
18	17	16	15	14	13
04		05		06	
19	20	21	22	23	24
30	29	28	27	26	25
09		08		07	
31	32	33	34	35	36

TOWNSHIP LOCATOR

R16W	R15W	R14W	R13W	
T55N	04	03	02	01
T54N	05	06	07	08
T53N	12	11	10	9
T52N	13	14	15	16

SECTIONS 11, 12
 TWP. 55 N. RNG. 15 W.
33-03-1.2
 MAP NUMBER

REVISIONS

DATE	BY	CHANGES OR ADDITIONS
8-4-81	B.R.A.	